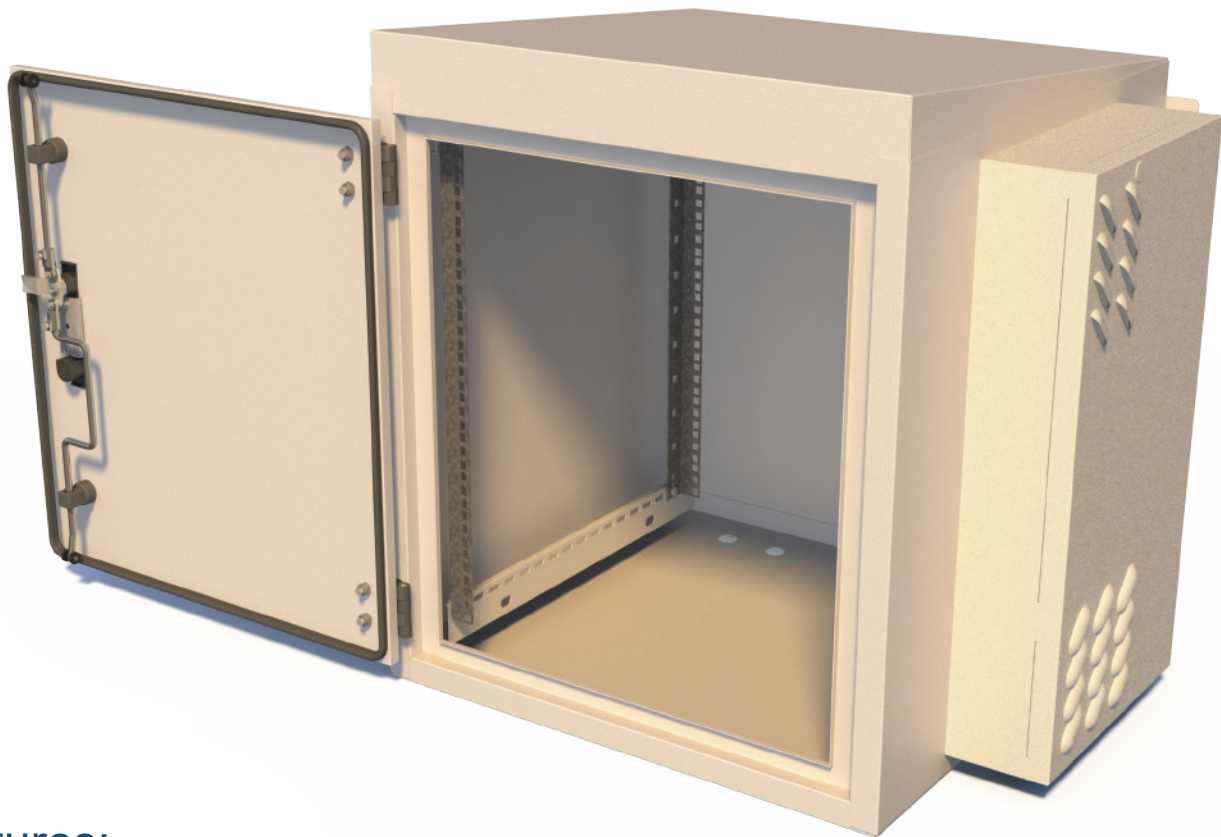
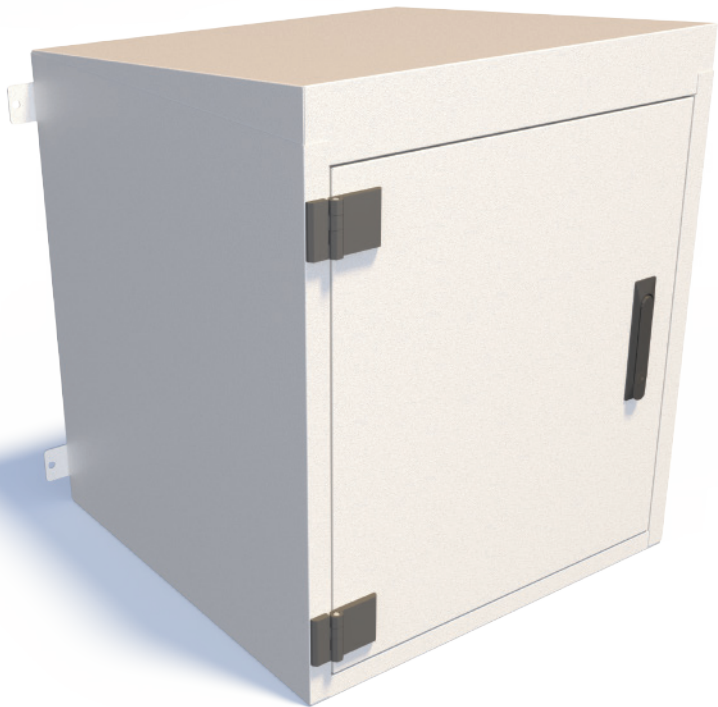


IP65 Air Conditioned Wall Box Cabinet



Features:

- Fully welded stainless steel construction
- 12U to 21U high
- 600mm wide
- 500, 600mm deep
- Full Height adjustable 19" profiles
- Hinged door with 3 point locking & swing handle
- Cable Gland entry points in base at the rear
- 4 off rear mounting lugs
- Colours grey or black as standard
- Rated to IP65



Conforms to the following standards:

IEC 60297-3
DIN 41494-7
EIA 310-D
BS 3192