

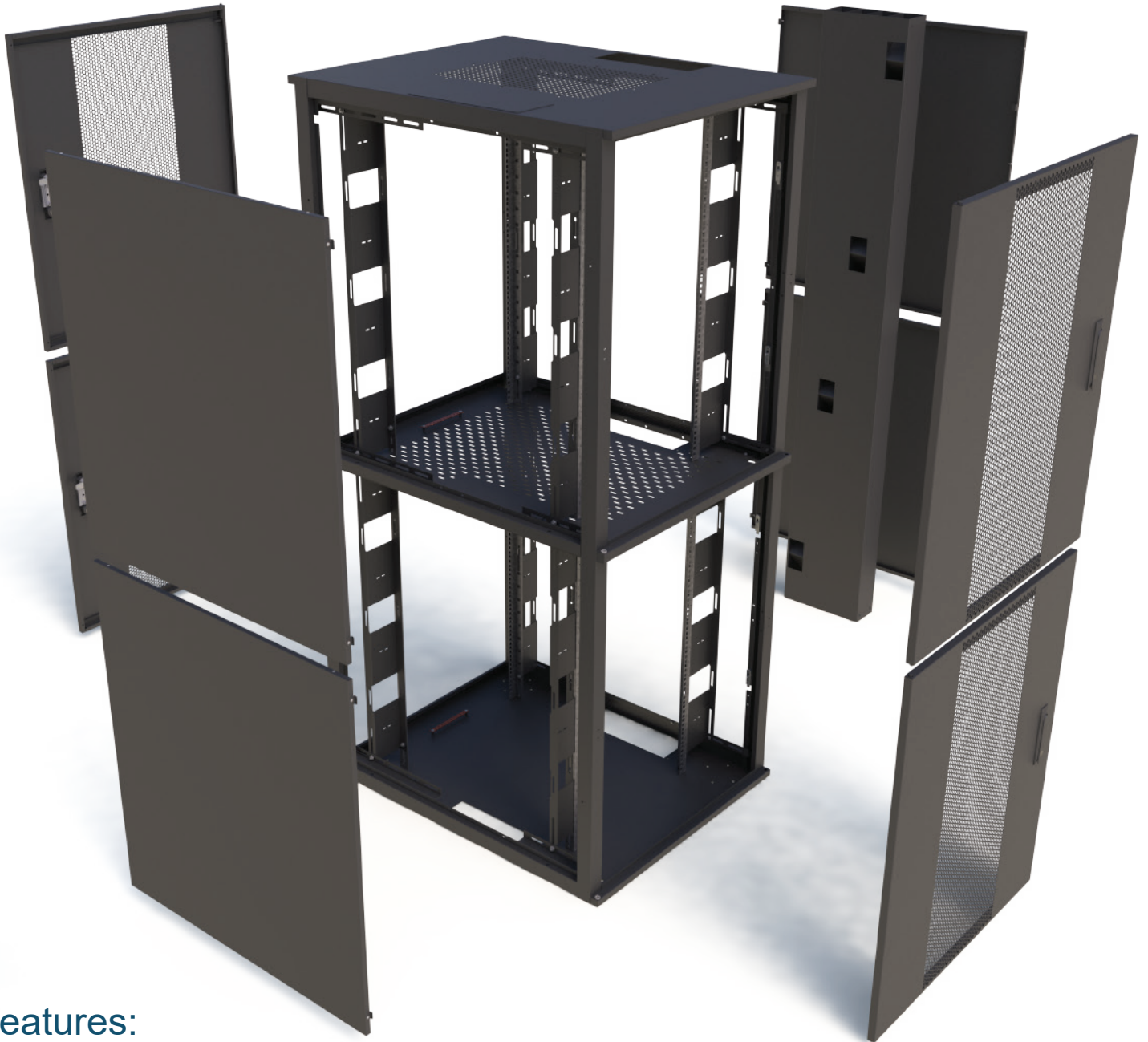
800 Wide 2 Way Co Location Cabinet

C
A
B
I
N
E
T



S

2 Way Co Location Cabinet



Features:

- 42U or 47U Height
- 2 Pairs of fully adjustable 19" mounting profiles in each compartment
- Front & rear mesh doors 80% open area
- Each compartment to have its own key number or combination lock
- Door panels are fully removable
- Doors can be hinged left or right
- Side panels removable, with internal latching
- Cabinets are supplied fully assembled
- All panels & doors fully earthed
- 70mm x 100mm cable access hole per Co Location
- Optional cable trunking can be mounted either side
- Vented centre partition shelf between compartments
- 10 Way x 80A earth bar fitted in every compartment
- Cabinet powder coated black as standard, other colours available on request

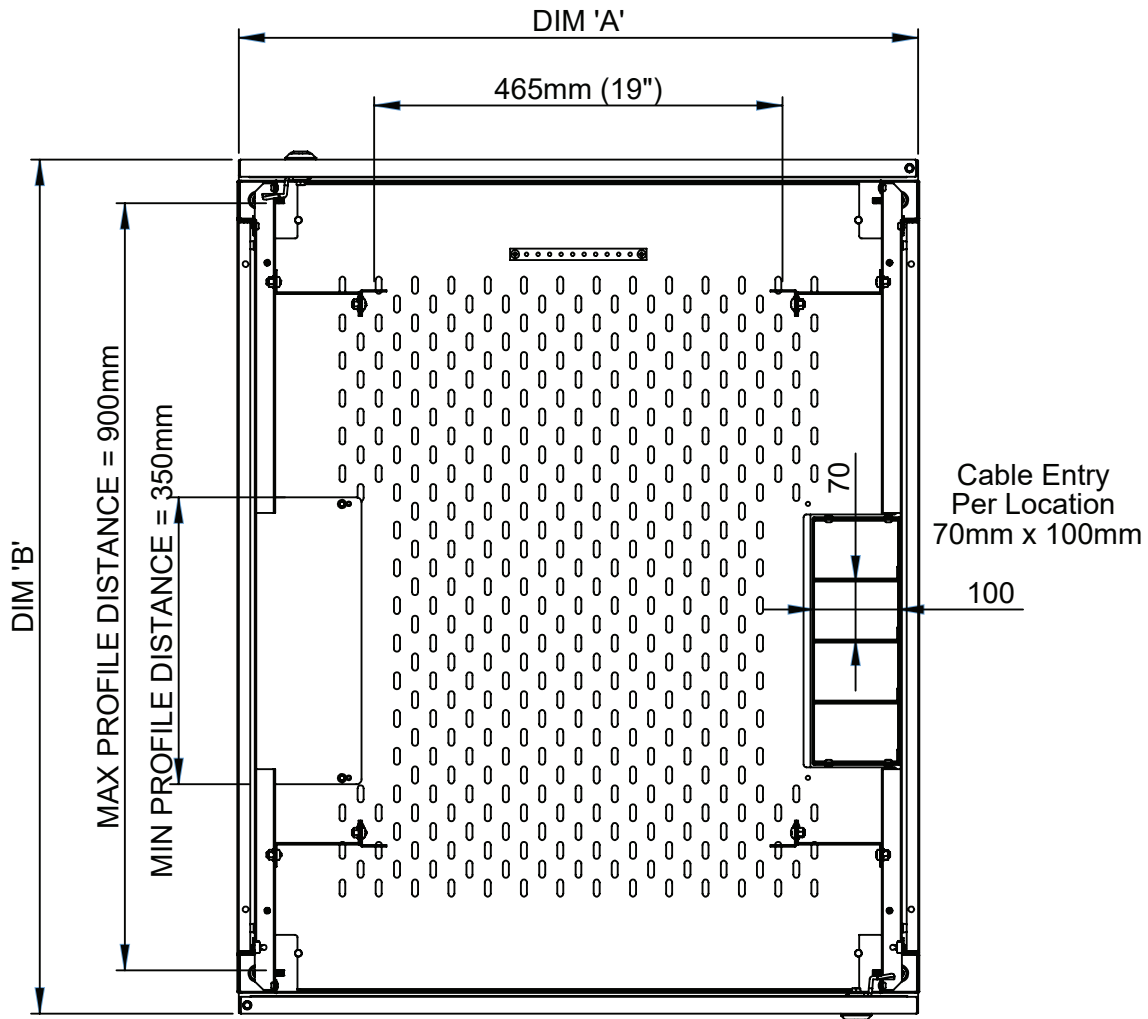
Conforms to the following standards:

IEC 60297-3
DIN 41494-7
EIA 310-D
BS 3192



Sarll Metal Products Ltd

Specification



| DIM 'A' | DIM 'B' | COMPARTMENT SIZE | HEIGHT |
|---------|---------|------------------|------------|
| 800 | 600 | 2 X 21U | 1985 (42U) |
| 800 | 600 | 2 X 22U | 2207 (47U) |
| 800 | 800 | 2 X 21U | 1985 (42U) |
| 800 | 800 | 2 X 22U | 2207 (47U) |
| 800 | 1000 | 2 X 21U | 1985 (42U) |
| 800 | 1000 | 2 X 22U | 2207 (47U) |
| 800 | 1200 | 2 X 21U | 1985 (42U) |
| 800 | 1200 | 2 X 22U | 2207 (47U) |



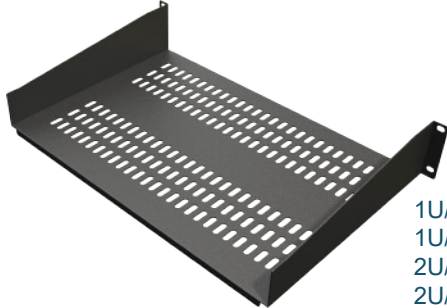
Conforms to the following standards:

- IEC 60297-3
- DIN 41494-7
- EIA 310-D
- BS 3192

Accessories

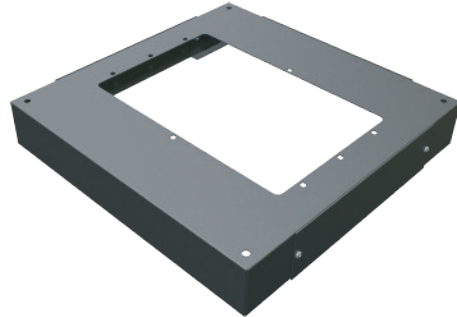
Modem shelves

available in 4 options



1U/190
1U/300
2U/300
2U/400

Plinth



19" Power Distribution Unit

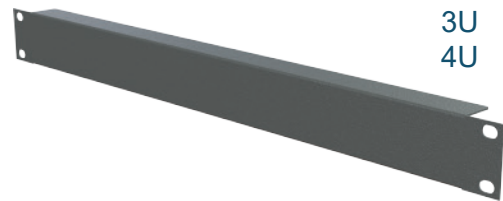


Horizontally mounted PDU
19" 4 way
19" 6 way

19" 6 way shown only

Blanking panels

available in 4 options



1U
2U
3U
4U

Earthing kit



Cage nut kit

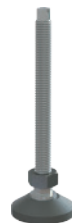


Castors

Medium Duty 300kg
Heavy Duty 600kg



Adjustable foot



Conforms to the following standards:

IEC 60297-3
DIN 41494-7
EIA 310-D
BS 3192