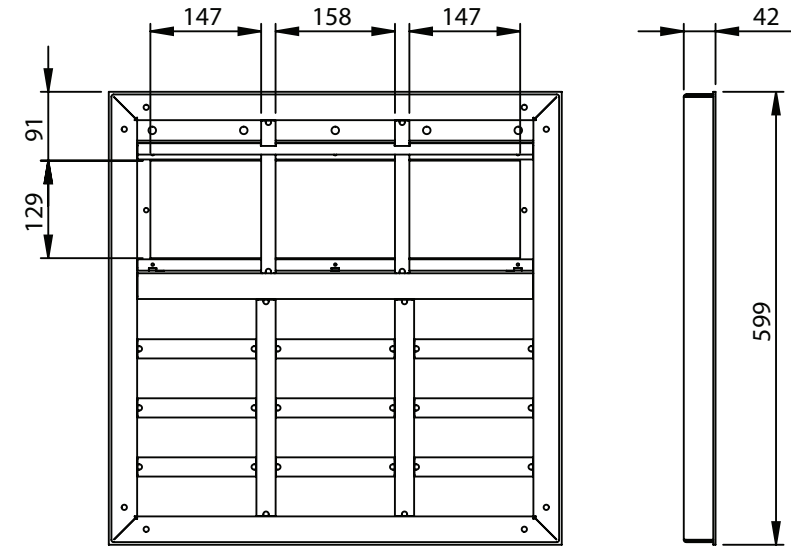
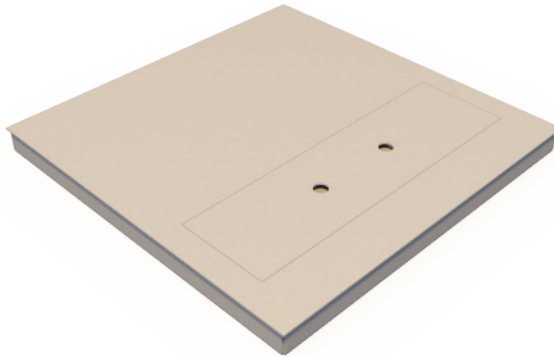
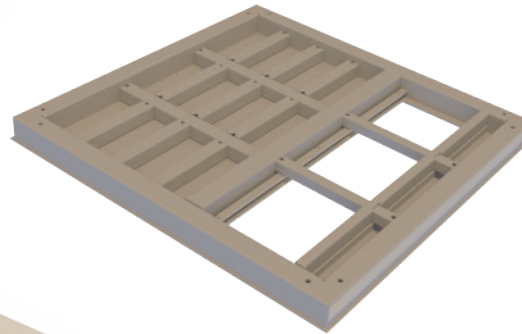
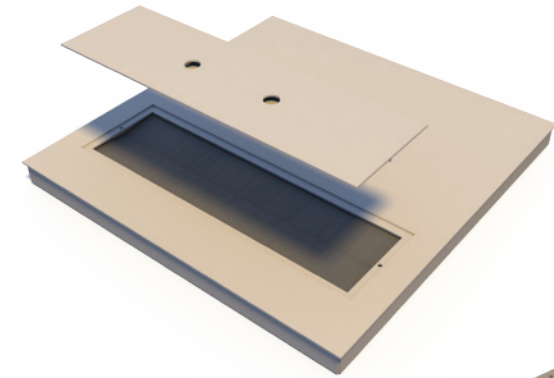


600 x 600 Heavy duty floor tile

- Length 600mm x Width 600mm x Height 42mm
- Removable gland plate in top
- 489mm x 129mm brushed cable access hole in top
- Fits onto Kingspan Alpha 3 Pedestals (can be adapted to suit other)
- Powder coated grey as standard



- The panel has been tested to the Heavy Grade loading requirements of the PSA MOB PF2 PS/SPU March 1992 "Platform Floors (Raised Access Floors) Performance Specification"
- The panel has been subjected to seven point loads of 4.5kN for 24 hours and a UDL load of 12kN/m² for 24 hours
- The panel has been subjected to three times safety factor loads at the same positions. The point loading being 13.5kN and the UDL 36kN/m² all maintained for 5 minutes