

## 600 Wide 8 Way Co Location Cabinet

C  
A  
B  
I  
N  
E  
T



S

# 8 Way Co Location Cabinet



## Features:

- 42U Height
- 2 Pairs of fully adjustable 19" mounting profiles in each compartment
- Front & rear mesh doors 80% open area
- Each compartment to have its own key number or combination lock
- Door panels are fully removable
- Doors can be hinged left or right
- Side panels removable, with internal latching
- Cabinets are supplied fully assembled
- All panels & doors fully earthed
- 70mm x 26mm cable access hole per Co Location
- Optional cable trunking can be mounted either side
- Vented centre partition shelf between compartments
- 10 Way x 80A earth bar fitted in every compartment
- Cabinet powder coated black as standard, other colours available on request

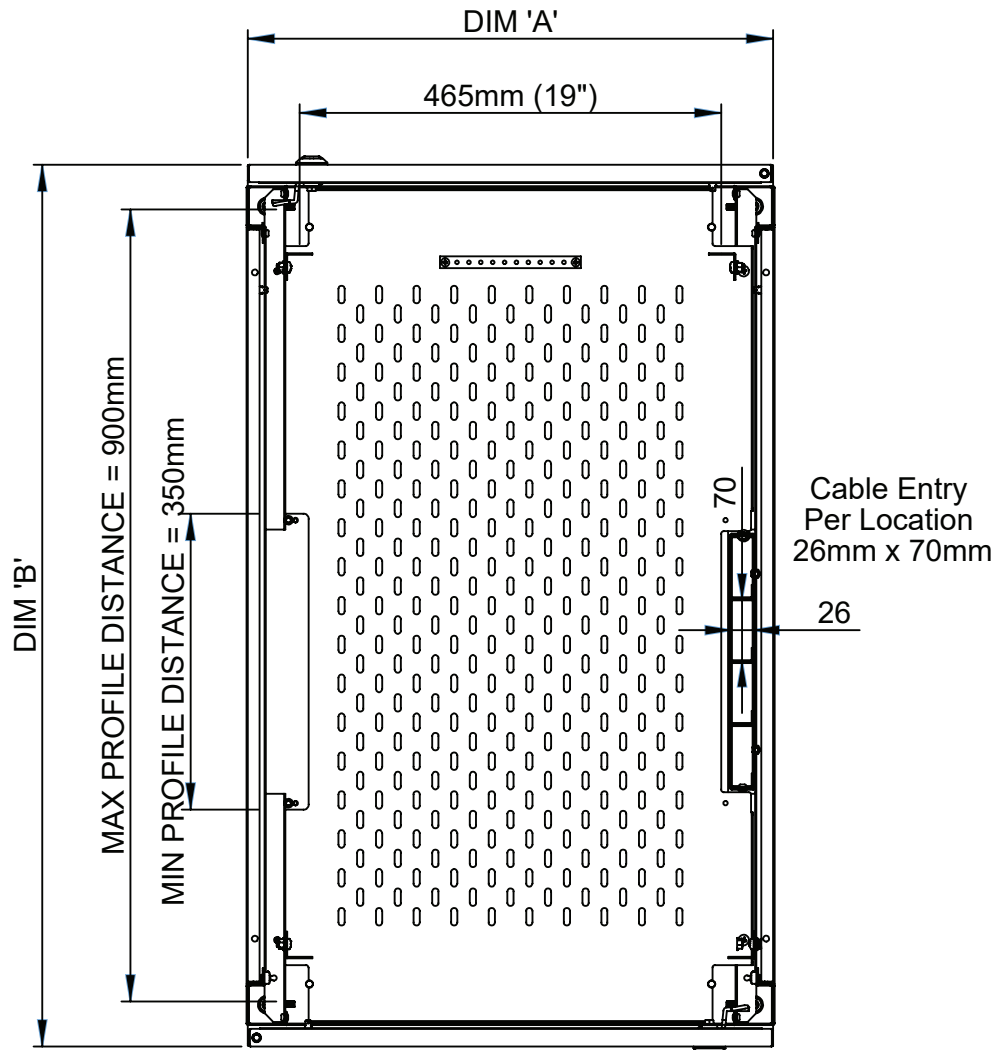
Conforms to the following standards:

IEC 60297-3  
DIN 41494-7  
EIA 310-D  
BS 3192



Sarll Metal Products Ltd

# Specification



DIM 'A'	DIM 'B'	COMPARTMENT SIZE	HEIGHT
600	600	8 X 5U	1985 (42U)
600	800	8 X 5U	1985 (42U)
600	1000	8 X 5U	1985 (42U)
600	1200	8 X 5U	1985 (42U)



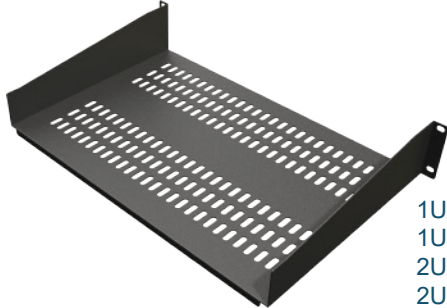
Conforms to the following standards:

IEC 60297-3  
DIN 41494-7  
EIA 310-D  
BS 3192

# Accessories

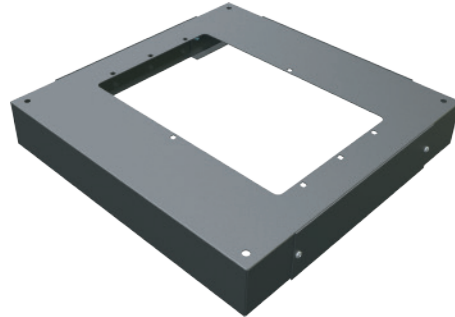
## Modem shelves

\*available in 4 options\*



1U/190  
1U/300  
2U/300  
2U/400

## Plinth



## 19" Power Distribution Unit

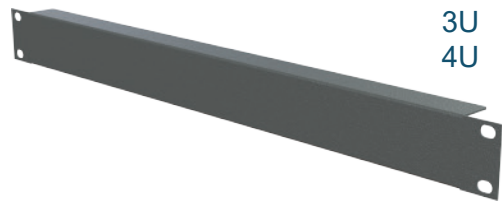


Horizontally mounted PDU  
19" 4 way  
19" 6 way

\*19" 6 way shown only\*

## Blanking panels

\*available in 4 options\*



1U  
2U  
3U  
4U

## Earthing kit



## Cage nut kit



## Castors

Medium Duty 300kg  
Heavy Duty 600kg



## Adjustable foot



Conforms to the following standards:

IEC 60297-3  
DIN 41494-7  
EIA 310-D  
BS 3192