

C
A
B
I
N
E
T



S

2 Part Wall Box Features



Quick release front door with inset acrylic panel can be hinged left or right

Fully removable vented side panels fitted with latch located on inside

Front box with lift & drop hinge with cam lock to secure to rear box, can be hinged either side

Rear wall box 100mm deep with 4 mounting points, can be mounted on it's own before adding front section & door

Fitted with 1 set of fully adjustable 19" profiles at front, 1 fixed set at rear



Removable gland plate for cable access in the top & bottom of rear box

Cabinet supplied powder coated in Black texture or Goose grey



Conforms to the following standards:

IEC 60297-3
DIN 41494-7
EIA 310-D
BS 3192

2 Part Wall Box Specifications



6U x 500 (400/100)
Width: 602mm
Height: 353mm
Depth: 500mm

Other sizes available upon request



9U x 500 (400/100)
Width: 602mm
Height: 487mm
Depth: 500mm

Other sizes available upon request



12U x 500 (400/100)
Width: 602mm
Height: 620mm
Depth: 500mm

Other sizes available upon request



15U x 500 (400/100)
Width: 602mm
Height: 753mm
Depth: 500mm

Other sizes available upon request



18U x 500 (400/100)
Width: 602mm
Height: 887mm
Depth: 500mm

Other sizes available upon request



21U x 500 (400/100)
Width: 602mm
Height: 1020mm
Depth: 500mm

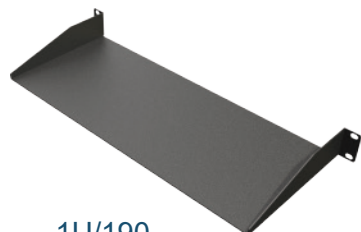
Other sizes available upon request

Conforms to the following standards:

IEC 60297-3
DIN 41494-7
EIA 310-D
BS 3192

Accessories

Modem shelves



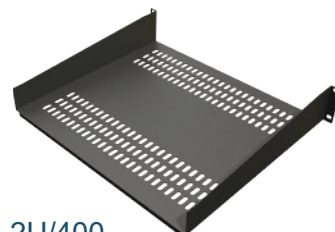
1U/190



1U/300



2U/300

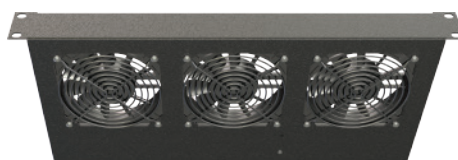


2U/400

19" Fan chassis



19" 2 way



19" 3 way

19" Power Distribution Unit



19" 4 way



19" 6 way

Earthing kit



Cage nut kit



Conforms to the following standards:

IEC 60297-3
DIN 41494-7
EIA 310-D
BS 3192